



# Bobcat

*One Tough Animal*

SKID-STEER LOADERS

# S66, S76, S86

R-Series

🌐 Europe



# INTRODUCTION

# ONE TOUGH ANIMAL

## ► OUR MISSION

We empower operators to accomplish more, while working in the toughest conditions and tightest situations. When our customers have the will, we provide the way.



## ► BOBCAT'S HISTORY

In 1958, the Melroe Manufacturing Company introduced a compact front-end loader that quickly evolved into the M400, the world's first true skid-steer loader. The company soon adopted what became the world famous 'Bobcat' brand — and its success paved the way for the global compact equipment industry we see today.

## ► INNOVATION CENTER IN DOBŘÍŠ

Today, Bobcat's EMEA headquarters in Dobříš, Czech Republic, serves as a hub for innovation. Here, a manufacturing plant produces around 25 000 machines annually for EMEA customers and global export. The site is also home to the Bobcat Innovation Centre, where rigorous testing and product development take place using advanced facilities like climate and anechoic chambers.



## ► BOBCAT TODAY

With over 60 years of manufacturing experience and a commitment to ongoing innovation, Bobcat has delivered millions of machines to the market. Known for their high performance, reliability, and unparalleled comfort, the diverse lineup caters to various applications. Whether it's landscaping, snow removal, construction, demolition, or roadwork, Bobcat machines empower users to accomplish more.





# PERFORMANCE AND AGILITY MEET SMART TECH

## ► TOUGHNESS MEETS INNOVATION

Using decades of experience developing the toughest loader on the planet, we added a host of improvements and smart technology to increase durability, boost performance, and bring first-class comfort to the all-new R-Series loaders.



**► AGILE AND STRONG**  
Outstanding lift capacity with high pushing and breakout forces, complemented by excellent machine agility.



**► BUILT TOUGH**  
One-piece cast steel loader arms and upgraded Bob-Tach™ with integrated Debris Shedding are designed for the most challenging conditions.



**► FIRST CLASS COMFORT**  
Connectivity options and soundproof cab make staying in touch easy, while longer wheel base delivers a smoother ride.



**► IMPROVED VISIBILITY**  
New cab construction is optimized for maximum visibility, further expandable by clear-view cab or rear-view camera options.



# POWER WHERE YOU NEED IT

## ► AGILE AND POWERFUL

Bobcat loaders are ready to conquer any challenge. They are renowned for their compact size, maneuverability, and smooth controls – but Bobcat never stops innovating. Each generation of machines is stronger, faster, and more durable than the last. The Super High Flow and 5-block coupler – exclusive to the S86 – offer greater productivity and up to 20% more efficiency with advanced attachments.



## OUTSTANDING PERFORMANCE

### ► IMPROVED COOLING

The R-Series cooling system is completely redesigned for optimal operation and uptime. The fan is almost 50% bigger and comes with a reversible option, increasing productivity in dirty conditions.

### ► INCREASED LIFTING CAPABILITIES

Thanks to the longer wheelbase and a perfect balance between weight and horsepower, the R-Series features outstanding stability and enough lift capacity for any job site.





# STEP INSIDE



**► CLEAR-VIEW CAB**  
The optional clear side enclosure adds thick polycarbonate side windows with abrasion-resistant coating – maximizing your visibility and ensuring the best possible view of tracks and corners.



**► INTUITIVE TOUCH CONTROLS**



Take control of all settings with the optional glove-sensitive 7-inch display. New display is waterproof and scratch resistant.

**► ADVANCED CONNECTIVITY**



Connect your phone — thanks to the integrated Bluetooth — and enhance your comfort during calls or play your favorite music.

**► PERFECT SEAT**



Comfortable suspension seat as a standard and optional cloth heated air-ride seat for maximum comfort all day — and all year – long.





# BUILT TO LAST

► **OUTSTANDING UPTIME**

R-Series loaders feature an extremely durable transmission with welded axle carrier and proven maintenance-free drive chain. It's unibody steel frame with integrated chain case makes the machines suitable for daily work in the most demanding environments, such as demolition sites and other industrial applications.

With a special focus on uptime, the R-Series features many small improvements that minimize maintenance and protect your machine: self-diagnostics, machine shutdown protection, battery run-down protection, cold weather protection, improved lubrication and access to greasing points, improved protection of hoses, and more.

► **EXTENDED SERVICE INTERVALS**

R-Series loaders feature a new fuel filter with more than double the media surface area, protecting the system even better and greatly extending the life of the filter. The improved engine design also significantly lengthens the air filter's life. This and other features allow you to improve efficiency and reduce operating costs, thanks to extended service intervals. Bobcat recommends first service after 500 hours of operation.



► **MACHINE IQ**

BOBCAT Machine IQ Wireless Communications enhances the support for your Bobcat machine.

- Durable built-in monitoring electronics
- Data is available to our machine monitoring specialist
- Maintenance is optimized for your business
- Data-driven services maximize uptime

► **STANDARD WARRANTY**

Bobcat develops every machine to the highest standards of quality and durability. That's why our standard warranty provides 24 months or 2 000 operating hours (whichever occurs first) of coverage.

**THERE'S NO TIME  
FOR DOWNTIME.  
STAND UP TO THE  
HARSHEST CONDITIONS,  
DAY AFTER DAY.**



► **PROTECTION PLUS EXTENDED WARRANTY**

Enjoy total peace of mind with Protection Plus extended warranty. Providing the same level of protection as the standard warranty, Protection Plus also reflects different customer needs and expectations by offering a choice of durations and annual operating hours. According to your needs, you can benefit from the coverage for up to 5 years or 6 000 engine hours. And Protection Plus is transferrable — so it will likely increase your machine's resale value.



► **BOBCARE**

A long-running machine starts with proper planned maintenance, which helps protect against repair costs and unplanned failures when you're counting on your machine to work.

- Avoid risk by preventing major repairs and complete failures.
- Accomplish more by reducing downtime and increasing your productivity and profitability.



# S66

## ► COMPACT YET POWERFUL

Despite its compact footprint, the S66 offers a surprising amount of power with a rated operating capacity of 1 184 kg while running on the same reliable engine as the S76.



# S76

## ► POWER MEETS CONTROL

With a rated operating capacity of 1 367 kg, the S76 is designed to do more, even in the most demanding environments. Enjoy excellent reliability, versatility, and productivity over a wide range of applications with whatever attachment you need for the job at hand.



# CHOOSE YOUR ANIMAL

# S86

## ► BIGGER & BETTER

Reach father and do more in a powerful yet agile machine that's built to last. The S86's 1 587 kg rated operating capacity, outstanding 105 hp engine, 3 t tipping load, and Super High Flow function will stand up to many years of demanding work.





STANDARD EQUIPMENT & OPTIONS

	S66	S76	S86
CAB			
3-point seat belt	✓	✓	✓
4.3" Deluxe instrumentation (radio-ready)	✓	✓	–
5" touch display	•	•	✓
7" touch display	•	•	•
Adjustable suspension seat	✓	✓	✓
Heated cloth air ride seat with 3 point seat belt	•	•	•
Auto HVAC	•	•	•
Clear-view cab*	•	•	•
Deluxe pressurized cab* with HVAC	✓	✓	✓
FOPS kit*	•	•	•
Key start	✓	✓	✓
Keyless kit	•	•	•
Lexan rear window kit	•	•	•
Radio	•	•	•
Seat bar	✓	✓	✓
Selectable Joystick Controls (SJC)	✓	✓	✓
Special applications front door kit	•	•	•
LIGHTS & BEACON			
Beacon	•	•	•
LED side lighting kit	•	•	•
LED working lights front and rear	✓	✓	✓
Premium LED lights (with corner view)	•	•	•
Headlight guard kit	•	•	•
Tail light guard kit	•	•	•
TIRES			
Heavy duty tires	✓	✓	✓
Heavy duty tires, offset rims	•	✓	✓
Severe duty tires	•	✓	✓
Solid flex tires	•	✓	✓
Super float tires	•	–	–

	S66	S76	S86
PERFORMANCE			
Attachment control kit	✓	✓	✓
200 lbs (90 kg) counterweight kit	•	•	•
300 lbs (136 kg) counterweight kit	•	•	•
Auto-ride control	•	•	•
Auxiliary hydraulics: variable flow / maximum flow rate	✓	✓	✓
Bob-Tach™ attachment system	✓	✓	✓
Bobcat Interlock Control System (BICS)	✓	✓	✓
Dual direction bucket positioning (including ON / OFF switch)	✓	✓	✓
Engine block heater kit	•	•	•
Engine / hydraulics system shutdown	✓	✓	✓
Front axle counterweight kit	•	•	•
Five coupler auxiliary block	–	–	•
Standard flow hydraulics	–	–	✓
High flow hydraulics	✓	✓	•
Super flow hydraulics	–	–	•
Lift arm support	✓	✓	✓
Power Bob-Tach™	•	•	•
Rear auxiliary hydraulic kit	•	•	•
Reversible fan	•	•	•
Spark arrestor muffler	✓	✓	✓
2-speed travel	✓	✓	✓
MISCELLANEOUS			
Backup alarm	✓	✓	✓
4-point lift kit	•	•	•
Debris seal kit	•	•	•
Horn	✓	✓	✓
Machine IQ (telematics)	✓	✓	✓
Operating manual	✓	✓	✓
Parking brake	✓	✓	✓
Rearview camera	•	•	✓
Road kit	•	•	•
Single-point lift kit	•	•	•
Warranty: 24 months or 2 000 hours (whichever comes first)	✓	✓	✓

\* Roll Over Protective Structure (ROPS) – meets requirements of SAE-J1040 and ISO 3471; Falling Object Protective Structure (FOPS) – meets requirements of SAE-J1043 and ISO 3449, Level I

• = option    ✓ = standard    – = not available or not compatible

PERSONALIZE YOUR MACHINE

Sometimes, we all want to add a specific functionality or a personal touch to the machine. Choose from a list of comprehensive options and customize your loader to your heart’s content!



Auto HVAC      Auto Ride Control      Headlight guard kit



Lexan rear window kit      LED side lighting kit      Power Bob-Tach™



Reversible fan      Reversing camera      Tail light guard kit



Clear view cab



5-block coupler for Super High Flow



Premium LED lights (with corner view)



7" touch display



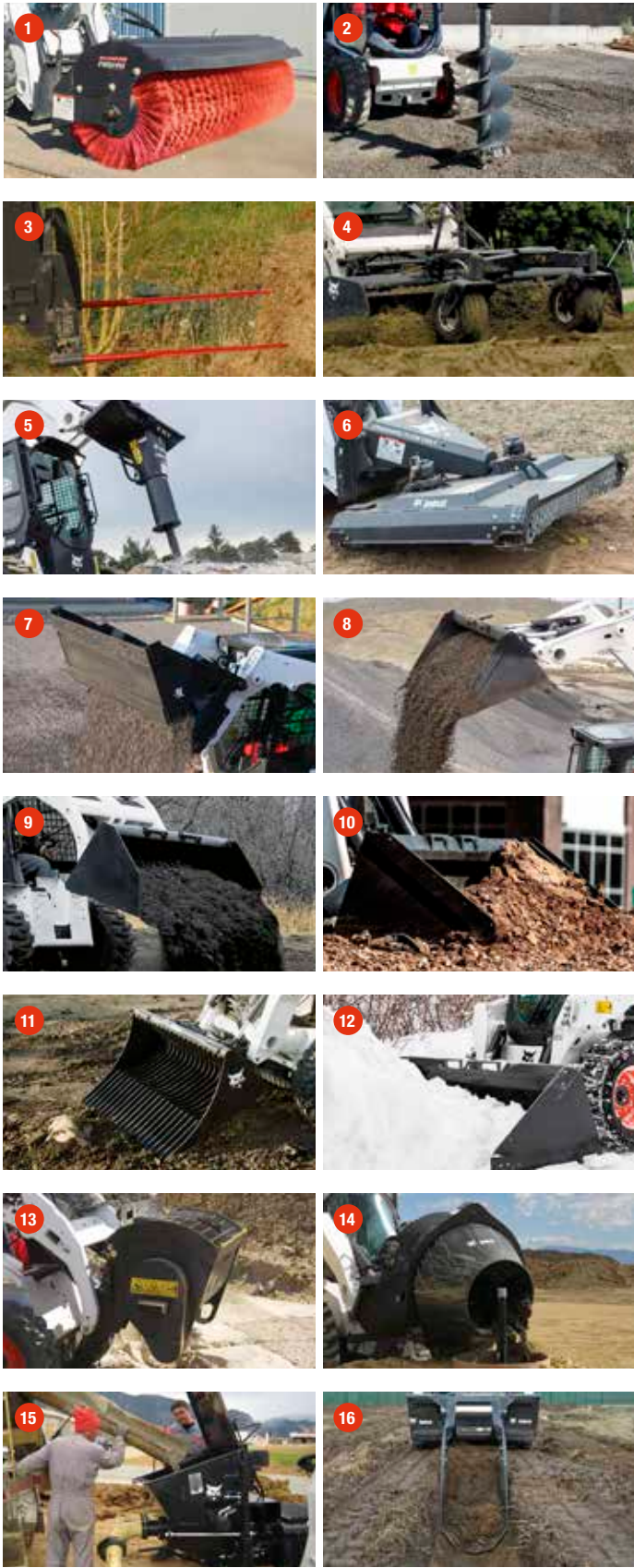
MULTI-TOOL CARRIER

BOBCAT ATTACHMENTS

Get more versatility and efficiency with Bobcat attachments and implements.

- The largest choice of attachments in the industry.
- Match performance to your Bobcat machine.
- Work harder with stronger components and construction.
- Rest easy with the 12-month warranty on every genuine Bobcat attachment.

TOP SELECTION OF ATTACHMENTS			
	S66	S76	S86
1 Angle broom	•	•	•
2 Auger	•	•	•
3 Bale fork	•	•	–
4 Box blade	•	•	•
5 Breaker	•	•	•
6 Brushcat™ rotary cutter	•	•	•
7 Bucket, combination	•	•	•
8 Bucket, construction / industrial	•	•	•
9 Bucket, fertilizer and grain	•	•	•
10 Bucket, low profile	•	•	•
11 Bucket, skeleton	•	•	•
12 Bucket, snow & light material	•	•	•
13 Bucket, mixing	•	•	•
14 Concrete mixer	•	•	•
15 Concrete pump	•	•	•
16 Digger	•	•	•
17 Dozer blade	•	•	•
18 Flail cutter	•	•	•
19 Forestry cutter	•	•	•
20 Grader	•	•	•
21 Grapple, industrial	•	•	•
22 Grapple, root	•	•	•
23 Landplane	•	•	•
24 Landscape rake	•	•	•
25 Laser equipment	•	•	•
26 Mower	•	•	•
27 Pallet fork	•	•	•
28 Planer	•	•	•
29 Sand cleaner	•	•	•
30 Scarifier	•	•	•
31 Scraper	•	•	•
32 Snow pusher	•	•	•
33 Snow v-blade	•	•	•
34 Soil conditioner	•	•	•
35 Soil and asphalt spreader	•	•	•
36 Stump grinder	•	•	•
37 Sweeper	•	•	•
38 Tiller	•	•	•
39 Tree transplanter	•	•	•
40 Trencher	•	•	•
41 Utility fork	•	•	•
42 Vibratory roller	•	•	•
43 Wheel saw	•	•	•
44 Wood chipper	•	•	•

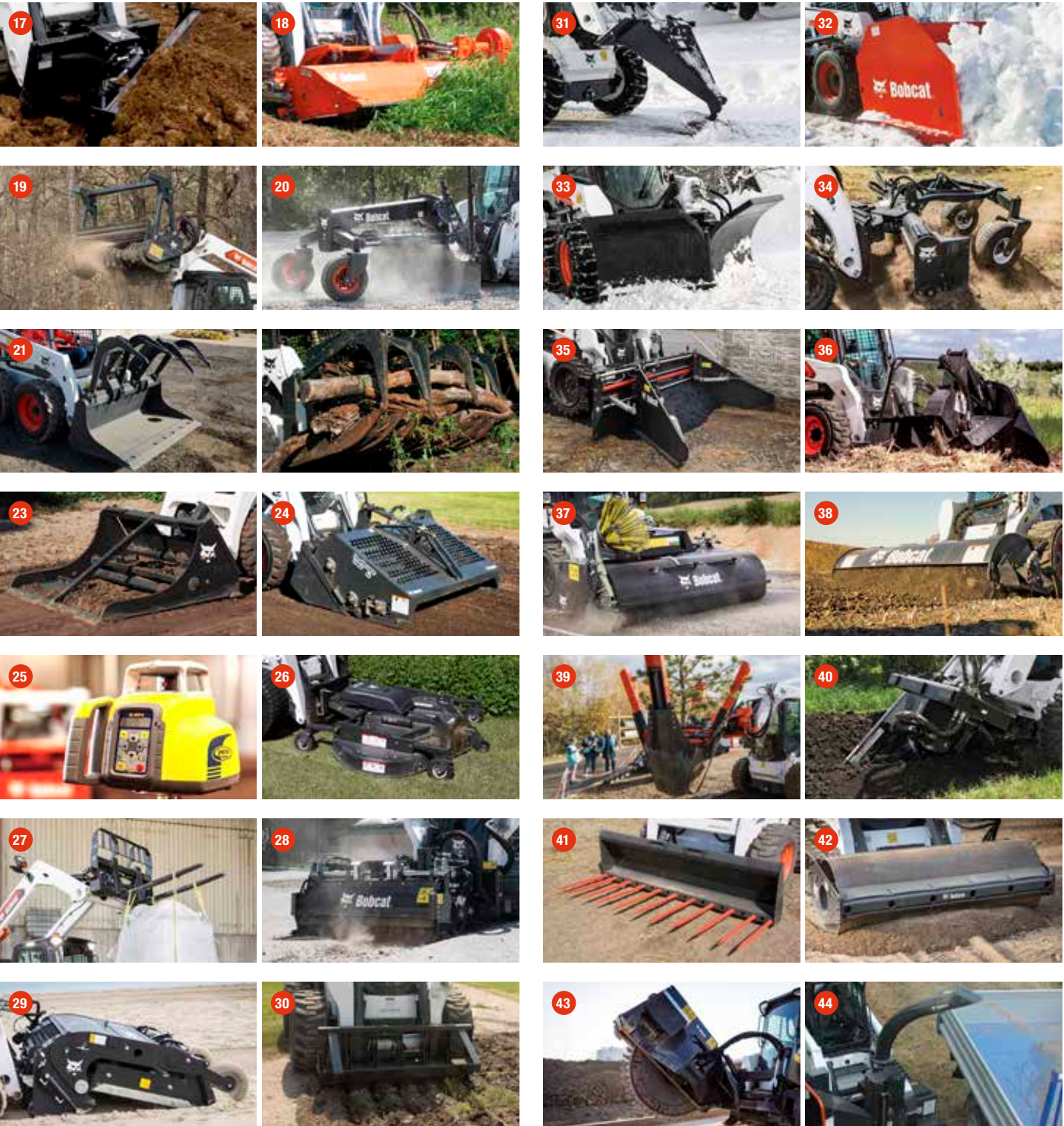


Bobcat R-Series loaders feature High or Super Flow hydraulics for enhanced performance with advanced attachments.

Actual attachment compatibility may vary depending on the machine configuration. Contact your dealer for specific compatibility details.

• = available    – = not available

MULTI-TOOL CARRIER



BOBCAT OFFERS A WIDE RANGE OF ATTACHMENTS TO MEET YOUR NEEDS. CHECK OUT THE 'BOBCAT ATTACHMENT CATALOG' FROM YOUR DEALER OR DOWNLOAD THE 'ONE TOUGH WORLD' APP VIA THE QR CODE.





SPECIFICATIONS

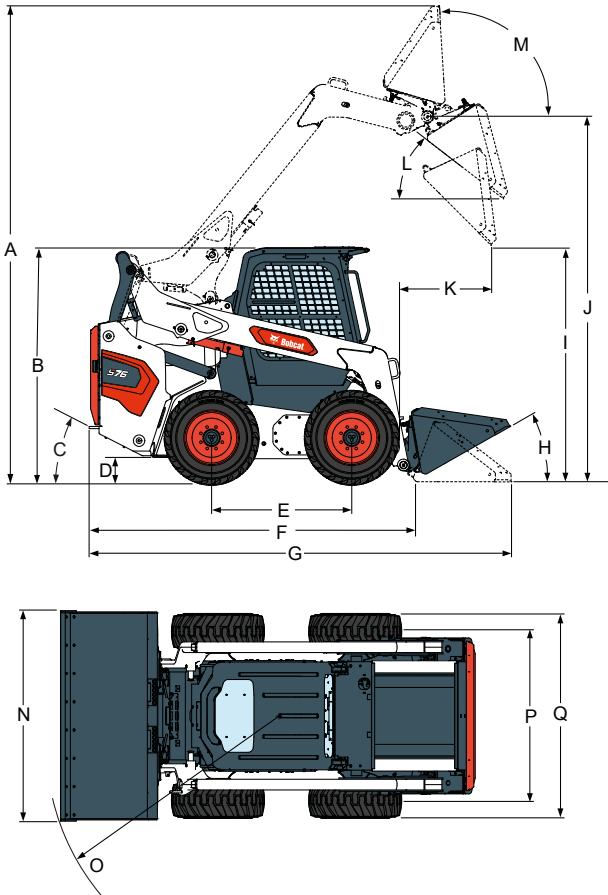
SPECIFICATIONS				
	Unit	S66	S76	S86
MACHINE RATING				
Tipping load (ISO 14397-1)	kg	2 359	2 722	3 175
Rated operating capacity (ISO 14397-1)	kg	1 184	1 361	1 587
Pump capacity std flow (at pump rpm)	l/min	66.5	88.1	89.3
Pump capacity high flow (at pump rpm)	l/min	101.8	114.7	138.5
Pump capacity super flow (at pump rpm)	l/min	–		159
System relief at quick couplers	MPa	23.8 – 24.5		
Travel speed (low)	km/h	11.8	10.9	19.3
Travel speed (high)	km/h	17.3	19	10.8
Lift arm path		vertical		
DIMENSIONS				
Length with standard bucket	mm	3 427	3 737	3 900
Width with standard bucket	mm	1 727	1 880	1 829
Height with operator cab	mm	2 045	2 079	2 111
Height to bucket hinge pin	mm	3 048	3 259	3 353
Wheelbase	mm	1 133	1 227	1 304
ENGINE				
Make / Model		Bobcat 2.4 l, 97 / 68 EC Stage V		D34 BSH SV, 97 / 68 EC Stage V
Fuel		diesel		
Cooling		liquid		
Power at 2600 rpm (ISO 14396)	kW	54.5		78.7
Torque at 1800 rpm (ISO 14396)	Nm	266.3	283.9	409
Number of cylinders		4		
Displacement	cm³	2 400		3 409
Fuel tank capacity	l	93.7	120	
WEIGHTS				
Operating weight*	kg	3 271	3 744	4 497
Shipping weight	kg	2 939	3 422	4 096
ENVIRONMENTAL				
Operator LpA (98/37 & 474-1)	dB(A)	80		77
Noise level LWA (EU Directive 2000/14/EC)	dB(A)	103		101
Whole body vibration (ISO 2631–1) High speed	ms <sup>-2</sup>	0.8		0.59
Hand-arm vibration (ISO 5349–1) High speed	ms <sup>-2</sup>	2.8		1.16
FORCES				
Lift breakout force	daN	2 200	2 608	
Tilt breakout force	daN	2 440	2 654	
Push force	daN	2 758	–	–
CYCLE TIMES				
Raising lift arms	s	3.8	3.9	
Lowering lift arms	s	2.5	2.6	
Bucket rollback	s	1.7		
Bucket dump	s	2.3		

\*Base machine with bucket, operator and full fuel tank

Certain specification(s) are based on engineering calculations and are not actual measurements. Specification(s) are provided for comparison purposes only and are subject to change without notice. Specification(s) for your individual Bobcat equipment will vary based on normal variations in design, manufacturing, operating conditions, and other factors. Pictures of Bobcat units may show other than standard equipment.

SPECIFICATIONS

DIMENSIONS



	Unit	S66	S76	S86
<b>A</b> Operating height	mm	3 910	4 252	4 345
<b>B</b> Height with operator cab	mm	2 045	2 079	2 111
<b>C</b> Angle of departure	°	25	27	26
<b>D</b> Ground clearance	mm	214	235	236
<b>E</b> Wheelbase	mm	1 133	1 227	1 304
<b>F</b> Length without attachment	mm	2 718	2 893	3 059
<b>G</b> Length with standard bucket	mm	3 427	3 737	3 900
<b>H</b> Rollback at ground position	°	30		
<b>I</b> Dump height with standard bucket	mm	2 396	2 526	2 586
<b>J</b> Height to bucket hinge pin	mm	3 048	3 259	3 353
<b>K</b> Dump reach at maximum height	mm	803	950	964
<b>L</b> Dump angle at maximum height	°	37		40
<b>M</b> Rollback fully raised at maximum height	°	94		93
<b>N</b> Width with standard bucket	mm	1 727	1 880	
<b>O</b> Turning radius with standard bucket	mm	2 033	2 228	2 300
<b>P</b> Track, standard tires	mm	1 407	1 584	1 592
<b>Q</b> Width with standard tires	mm	1 642	1 829	





# FINANCING OPTIONS

## 24, 36, OR 48-MONTH FINANCING\*

Take advantage of 24, 36, or 48-month financing programs starting from **0% interest** and improve your cash flow.

Ask your dealer for the financing offers available.

**340** MACHINES / **150** ATTACHMENT FAMILIES / **1** TOUGH ANIMAL



**SKID-STEER  
LOADERS**



**COMPACT TRACK  
LOADERS**



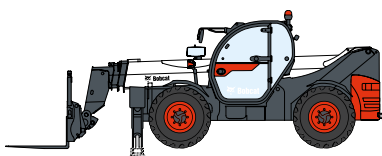
**COMPACT WHEEL  
LOADERS**



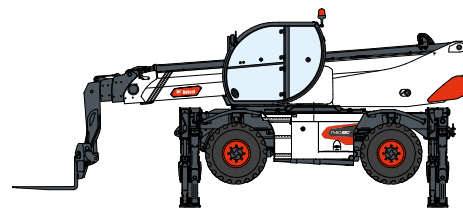
**COMPACT  
EXCAVATORS**



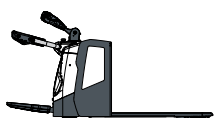
**FORKLIFTS**



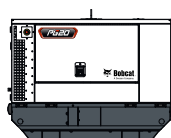
**TELEHANDLERS**



**ROTARY TELEHANDLERS**



**WAREHOUSE  
EQUIPMENT**



**GENERATORS**



**AIR  
COMPRESSORS**



**LIGHT COMPACTION  
EQUIPMENT**



**COMPACT  
TRACTORS**



**MINI TRACK  
LOADER**



**MOWERS**



**ATTACHMENTS**

**DOOSAN**

**Bobcat is a Doosan Company.** Doosan is a global leader in construction equipment, power & water solutions, engines, and engineering proudly serving customers and communities for more than a century. | Bobcat and the Bobcat logo are registered trademarks of Bobcat Company in the United States and various other countries. ©2024 Bobcat Company. All Rights Reserved.

[www.bobcat.com](http://www.bobcat.com)

©2024 BOBCAT B4501706-EN (12-24)



# Bobcat

\*Financing options may vary by country and dealer. Always ask your dealer about currently available financing options. Terms and conditions may apply.

Doosan Bobcat EMEA, U Kodelky 1810, 263 12 Dobříš, Czech Republic