

Performance

Lifting height — on tyres	10290.0 mm
Rated capacity	3500 kg
Capacity (at max. height on tyres)	400 kg
Capacity (at max. reach on tyres)	600 kg
Max. reach on tyres	6886.0 mm

Weights

Weight (unladen)	7340 kg
------------------	---------

Traction

Standard tyres	SOLIDEAL 405/70-20 14PR
1st gear / low range	7.0 km/h
1st gear / high range	26.0 km/h

Drive System

Transmission	Hydrostatic with electronic regulation
Main drive	Hydrostatic motor

Engine

Make / Model	Perkins / 1104D-44TA
Fuel	Diesel
Cooling	Water
Rated power (ISO 14396)	100.0 HP
Rated power (ISO 14396)	74.5 kW
Maximum torque at 1400 RPM	410.0 Nm
Number of cylinders	4
Displacement	4.40 L

Hydraulic System

Pump type	Gear pump with LS valve
Pump capacity	100.00 L/min
Relief valve pressure setting	250.00 bar

Cycle Times

Lift time - no load	11.0 s
Lower time - no load	6.0 s
Telescope in time at max. reach - no load	7.0 s
Telescope in time at max. height - no load	7.0 s
Telescope out time at max. reach - no load	11.5 s
Telescope out time at max. height - no load	115.0 s

Brakes

Engine braking	Hydrostatic
Parking and emergency brake	Passive brake

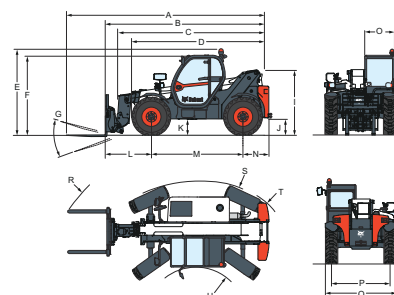
Fluid Capacities

Fuel tank	130.00 L
Hydraulic reservoir	71.00 L

Environmental

Sound pressure level at the operator station EN 12053 - 30kmh (LpA)	76 dB(A)
Level of acoustic power (LWA)	106 dB(A)
Whole body vibration (EN 13059)	0.90 ms ⁻²

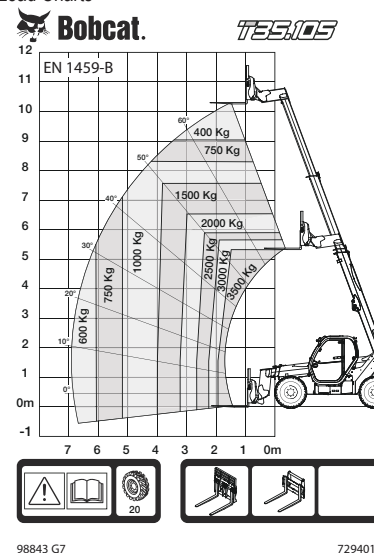
Dimensions



(-) 857.0 mm	(L) 1422.0 mm
(A) 6276.0 mm	(M) 2850.0 mm
(B) 5071.0 mm	(N) 799.0 mm
(C) 4936.0 mm	(O) 930.0 mm
(D) 4192.0 mm	(P) 1862.0 mm
(E) 2584.0 mm	(Q) 2264.0 mm
(F) 2445.0 mm	(R) 5025.0 mm
(G) 143°	(S) 5116.0 mm
(I) 1941.0 mm	(S) 3765.0 mm
(J) 415.0 mm	(U) 1245.0 mm

Load Charts

Load Charts



98843 G7

7294010

Options

Air conditioning	Boom wiring harness and electric connectors
Boom stop	Keyless ignition (start/stop with keypad)
Custom colour	Standard engine ignition (with key) with additional keypad security
Fire extinguisher	High comfort air suspension seat
Forward/Reverse control on Steering Wheel Lever (no longer on joystick)	Rotating tow hitch (including rear electric socket)
Lockable fuel cap	Basic option tyres - set of 4 x 400/80-24"
Loudspeaker & radio ready	Basic tow hitch
PVC Document holder	Michelin tyres - set of 4 x 400/80-24" 162A8 IND TL
Pintle tow hitch (including rear electric socket)	POWER CL
Protective grill for windshield (front and roof)	Pallet forks 1200mm length / Floating / 1.44m carriage / Forks included / Backrest
Rear Flat Mirror	
Roof window wiper	
Sun visor	
Support for vehicle registration plate	
Wheel wedge	
Work lights on boom	

Remote control system with on-board charger	included / For Quicktach tool carrier Pallet forks 1200mm length / Rigid frame / Forks included / Backrest included / For Quicktach tool carrier Dunlop tyres - set of 4 x 405/70-20" SPT9 MPT (SEMI INDUSTRIAL) Dunlop tyres - set of 4 x 405/70-24" SPT9 MPT (SEMI INDUSTRIAL) Fan inverter with manual and auto modes Quicktach carriage with hydraulic attachment lock (boom wiring harness mandatory) Cold start Cyclonic air prefilter
---	---